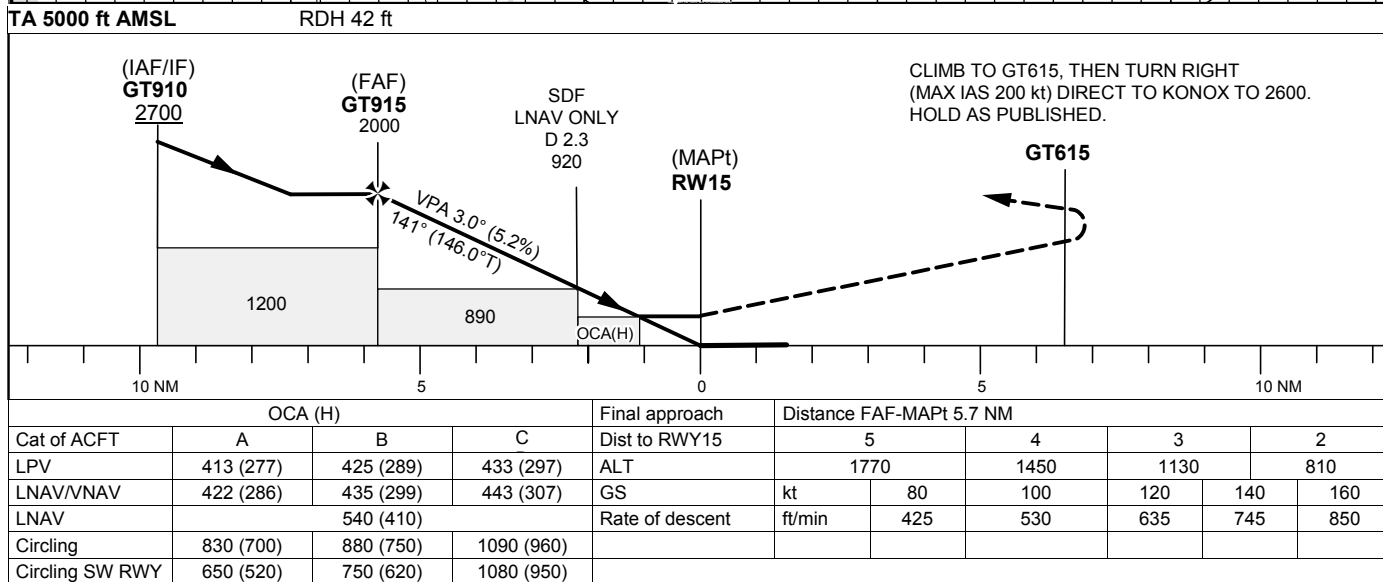


RNP RWY 15

THR ELEV 136 ft, AD ELEV 137 ft
 OCH are related to THR.
 BRG are MAG (True).
 ALT, HGT and ELEV in ft.

TROLLHÄTTAN TOWER	122.730
-------------------	---------

EGNOS Ch 54114 E 15A



AIRAC AIP AMDT 3/2025

TROLLHÄTTAN-VÄNERSBORG**RNP RWY15 via GT905**

Path Desc	Waypoint Identifier	Fly-over	Course °M(°T)	Dist (NM)	Turn Dir	Altitude (ft)	Speed	VPA/RDH	Rec Navaid	Navigation Specification
IF	GT905	-	-	-	-	+3000	-200	-	-	RNP APCH
TF	GT910	-	051° (056.0°)	3.5	-	-	-	-	-	RNP APCH

RNP RWY15 via GT900

Path Desc	Waypoint Identifier	Fly-over	Course °M(°T)	Dist (NM)	Turn Dir	Altitude (ft)	Speed	VPA/RDH	Rec Navaid	Navigation Specification
IF	GT900	-	-	-	-	+3000	-200	-	-	RNP APCH
TF	GT910	-	231° (236.2°)	4.0	-	-	-	-	-	RNP APCH

Path Desc	Waypoint Identifier	Fly-over	Course °M(°T)	Dist (NM)	Turn Dir	Altitude (ft)	Speed	VPA/RDH	Rec Navaid	Navigation Specification
TF	GT910	-	-	-	-	+2700	-190	-	-	RNP APCH
TF	GT915	-	141° (146.0°)	4.0	-	@2000	-	-	-	RNP APCH
TF	RW15	Y	141° (146.0°)	5.7	-	@178	-	-3.0/42	-	RNP APCH
TF	GT615	Y	141° (146.1°)	6.5	-	-	-	-	-	RNP APCH
DF	KONOX	Y	-	-	R	+2600	-200	-	-	RNP APCH

ESGT Holding KONOX

Path Desc	Waypoint Identifier	Fly-over	Course °M(°T)	Dist (NM)	Turn Dir	Altitude (ft)	Speed	VPA/RDH	Rec Navaid	Navigation Specification
HM	KONOX	Y	309° (313.6°)	-	L	+2600	-200	-	-	RNAV 1

FAS Data Block

RNP RWY 15

Input data

Operation Type	0
SBAS Provider	1 (EGNOS)
Airport Identifier	ESGT
Runway	15
Runway Letter	0 (None)
Approach Performance Designator	0
Route Indicator	
Reference Path Data Selector	0
Reference Path Identifier	E15A
LTP/FTP Latitude	581927.2570N
LTP/FTP Longitude	0122011.7795E
LTP/FTP Ellipsoidal Height (metres)	76.0
FPAP Latitude	581841.4060N
Delta FPAP Latitude (seconds)	-45.8510
FPAP Longitude	0122110.3760E
Delta FPAP Longitude (seconds)	58.5965
Threshold Crossing Height	42.0
TCH Units Selector	0 (feet)
Glidepath Angle (degrees)	3.00
Course Width (metres)	105.00
Length Offset (metres)	0
HAL (metres)	40.0
VAL (metres)	50.0

Output data

Data Block	10 14 07 13 05 0F 00 00 01 35 31 05 32 B1 07 19 07 57 4B 05 F8 16 CA 99 FE C9 C9 01 A4 01 2C 01 64 00 C8 FA ED A6 B6 31
Calculated CRC Value	EDA6B631

Required Additional Data

ICAO Code	ES
LTP/FTP Orthometric Height (metres)	41.4